

portfolio
tsz shek felex lau

tsz shek felex lau

*Born 1995 in British Hong Kong, I am currently based in the United Kingdom and Hong Kong.
I have recently completed my RIBA Part II studies at the University of Bath, with the ambition
of being a registered architect in the future.*

*I believe that architecture is for people - its goal is to be the beautiful setting against which
people go about their lives. As practitioners, we have a mission to create sustainable and socially
responsible built environments that inspire others to take on the world and make their mark.*

*My professional experience range from one-off residential housing to masterplanning, set in a
range of contexts across the world and across most work stages.*



work experience

NVB Architects, Frome - Architectural Assistant

Feb - Aug 17, Aug - Sep 19

RIBA Stages 0-4 works on education, residential (one-off housing to masterplanning), leisure and tourism

Preparation for submission of works to Local Planning Authorities

Hallmark Property Group / CDS LLP - Architectural Assistant

Aug 18 - Sep 19

RIBA Stages 4-5 works on student accommodation in London

Concept and planning stages for various commercial, tourism and residential works across the UK and Europe

Matter Design Ltd / VOX Atelier Ltd, Hong Kong - Architectural Assistant

Feb - Aug 16

Concept, detailed and technical design for various projects in China, Hong Kong and South Korea, ranging from interior design to masterplanning

Preparation of presentation documents, renders, drawing sets and detailed design

MTR Corporation Limited, Hong Kong - Summer Student (Property Projects Department)

Jun - Jul 15

Assisted in design development & construction coordination for various development areas in Hong Kong

Assisted in preparation of drawing for tender

University of Bath, Bath - Casual Student Ambassador (Dept of Architecture and Civ Engineering)

Apr 15

Leading campus tours for prospective students in the architecture course

education

University of Bath, Bath

Sep 14 - Jul 18

M(Arch): Results pending

BSc (Hons) Architecture: Upper second class honours

Diocesan Boys' School, Hong Kong

Sep 08 - May 14

International Baccalaureate Diploma Programme: 42 out of 45 points

activities / competitions

Hong Kong WKCD Young Architects & Designers Competition 2017 - Highlighted Entry

Jul 17

Competition to design and build a pavilion in Hong Kong. Jury panel includes Sou Fujimoto and Thomas Heatherwick.

RIBA "Imagine Bath" Competition - Participant

Feb 15

achievements / past roles

Bath Chinese Christian Fellowship - Member of Committee / Overseer

Jul 17

Administrative, design-based roles and supporting multi- and inter-cultural spiritual wellbeing support on campus.

University of Bath Dept. of Architecture and Civil Engineering - Peer mentor

Sep 15 - Jan 16

Mentoring year 1 architecture students by providing technical and academic support

Diocesan Boys' School International Baccalaureate

60% Internal Scholarship for the Academic year 2013-14

The Dr. Anthony H.Y. Tang Scholarship for an outstanding I.B. learner

The Dr. Anthony H.Y. Tang Scholarship for C.A.S. of I.B.

media mentions

Architecture Journal

Jul 18

"Degree show review: University of Bath" by Nick Vaughan

BBC Radio Bristol

Feb 18

Sunday Breakfast show interview

skills & interests

Computer aided design

Windows and Mac OS Operations

MS Word, Powerpoint, Excel

Adobe Photoshop, Premiere Pro, InDesign, Illustrator, Muse

Autodesk AutoCAD, 3DS Max, Revit, Vehicle Tracking

Trimble SketchUp

Rhinoceros, Grasshopper

Vray for SketchUp, 3DS Max

A360 Rendering for Revit

Basic website building, design and management

Languages

Fluent Cantonese, Mandarin and English communications

Obtained Bilingual Diploma (IBDP) in Chinese (Cantonese) and English

Interests

Travelling, photography, swimming, badminton



Gallery of Dreams

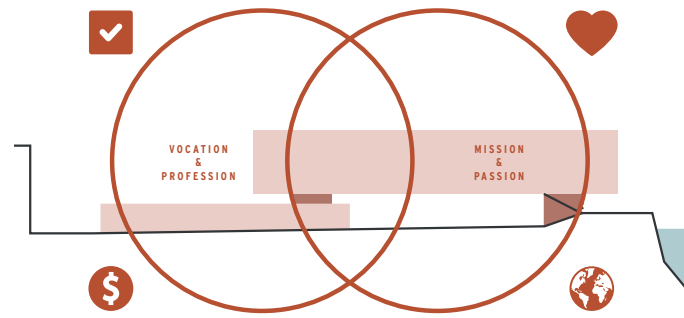
M(Arch) Thesis Project
New Orleans
Jan - Jun 2020

Art exhibition and studio facilities that celebrate the local heritage and creative industry.

Bringing people together across New Orleans has never been an easy task. Faced with the ever present risk of flooding, the disconnected nature of the city and the resulting lack of access to opportunities, local New Orleanians often struggle to find or access the channels to express themselves. Resources are limited, but people's dreams are not.

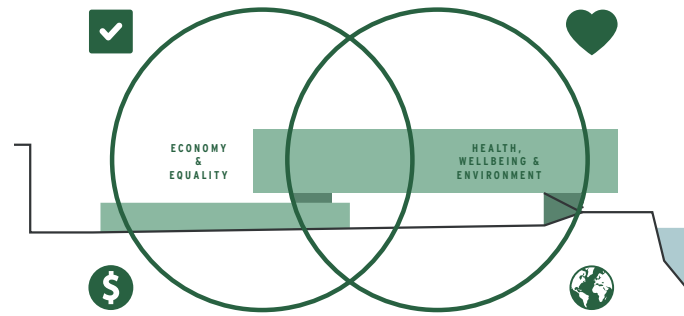
The Gallery of Dreams is a new exhibition space, designed with the community at the heart of its work. Together with associated studio spaces, it will work to unite the various art initiatives across the city, bringing together a stronger creative community that can gather its resources, skills and knowledge to promote the arts. It is a place not only to share dreams, but also to actualise them.





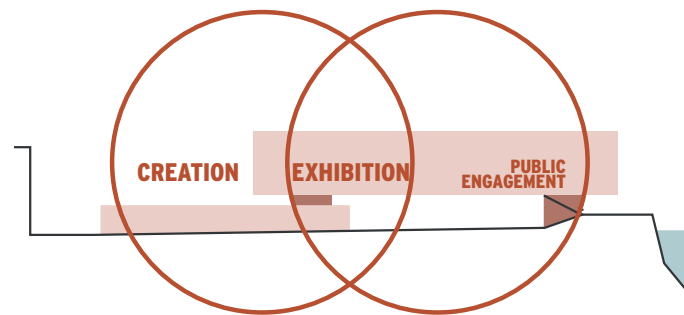
IKIGAI - A REASON FOR BEING

The building is driven by a Japanese concept of 'ikigai' - a reason for being. 'Ikigai' is a concept that is devised by tribes in southern Japan, containing four components they consider essential to finding the 'reason for being'. It is seen as a convergence of four elements: passion, mission, vocation and profession. It is what one loves and is good at, but also what the world needs and what one can be paid for.



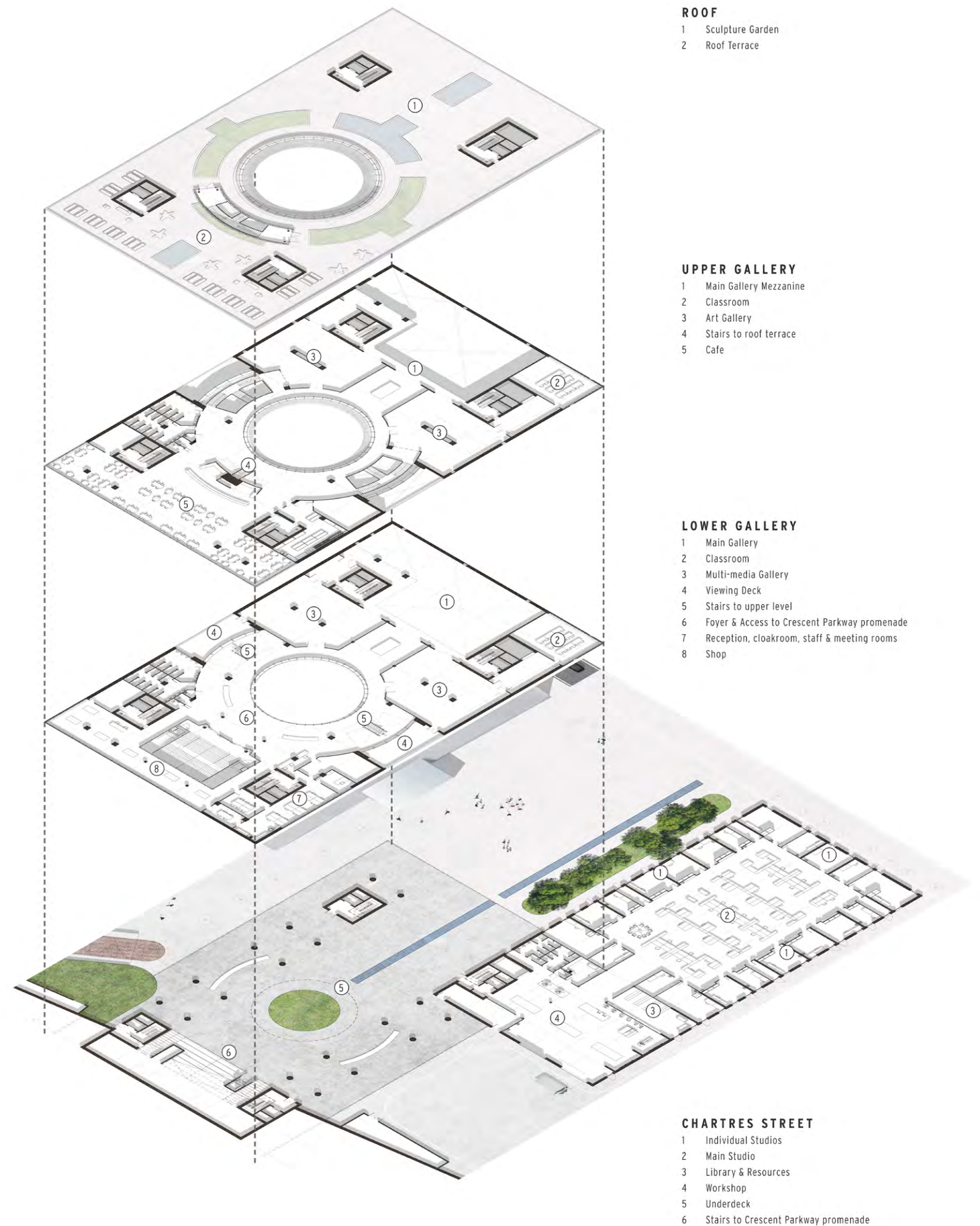
SUSTAINABILITY

Being the key theme, sustainability is not limited to ideas of environmental protection, but also relates to the various elements that contribute to maintaining a world that does not compromise on its ability to meet future needs. The UN's sustainability goals can be largely categorised to that of health & wellbeing, equality, environment and economy. Similar to the ikigai overlay, the grounded block relates closer to the local community, whereas the elevated block represents the 'higher' global concepts.



THE GALLERY OF DREAMS + THE STUDIO OF THE CITY

The three sections are assigned into the building, whereby the grounded block becomes the studio block, and the elevated block as a whole becomes the gallery block, consisting of both public-facing and exhibition elements.



ROOF

- 1 Sculpture Garden
- 2 Roof Terrace

UPPER GALLERY

- 1 Main Gallery Mezzanine
- 2 Classroom
- 3 Art Gallery
- 4 Stairs to roof terrace
- 5 Cafe

LOWER GALLERY

- 1 Main Gallery
- 2 Classroom
- 3 Multi-media Gallery
- 4 Viewing Deck
- 5 Stairs to upper level
- 6 Foyer & Access to Crescent Parkway promenade
- 7 Reception, cloakroom, staff & meeting rooms
- 8 Shop

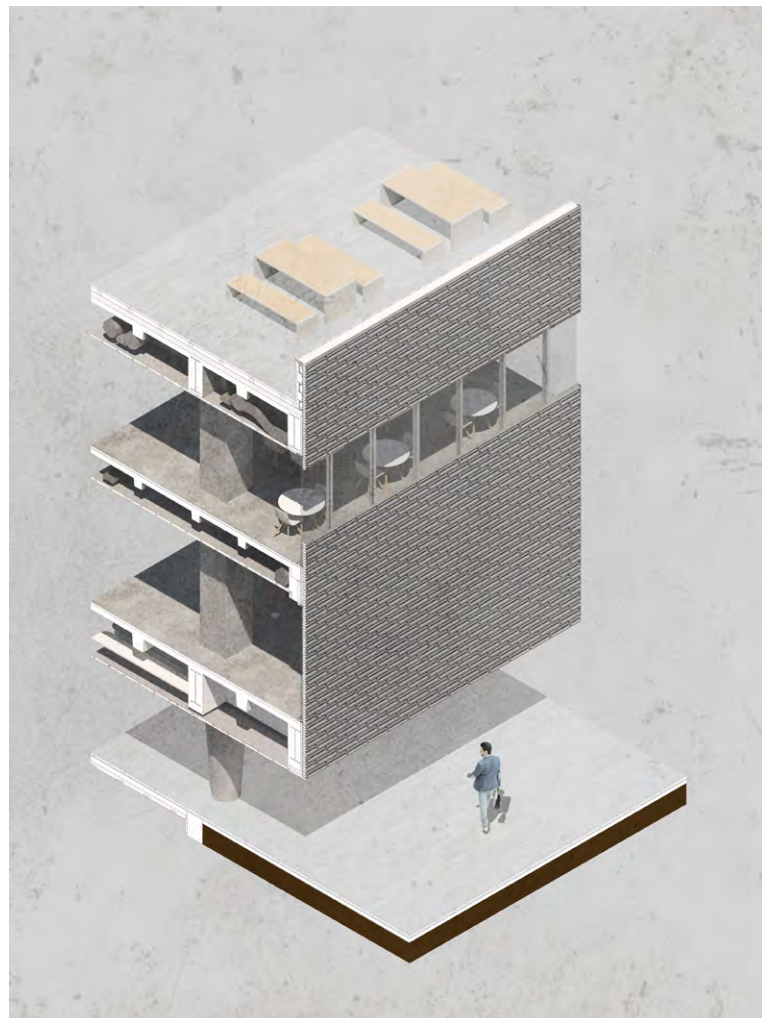
CHARTRES STREET

- 1 Individual Studios
- 2 Main Studio
- 3 Library & Resources
- 4 Workshop
- 5 Underdeck
- 6 Stairs to Crescent Parkway promenade



STUDIO

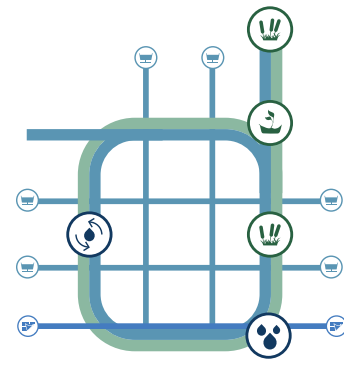
Creative minds take control over the spaces, each to their own liking and requirements. Nonetheless, the nature of the open studio allows for interactions between artists.



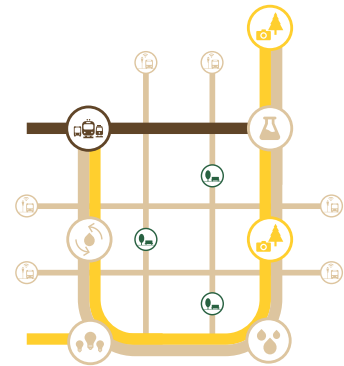
GALLERY

The main gallery is a configurable room capable of different setups for various kind of exhibitions, including a walkway which allow works to be observed at height.

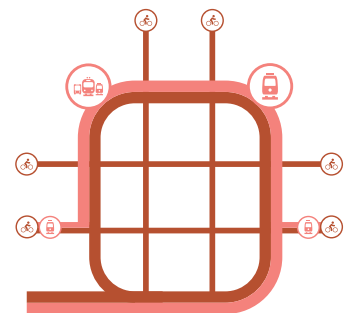
(Exhibited work: Universe of Water Particles on a Rock where People Gather, teamLab, 2018)



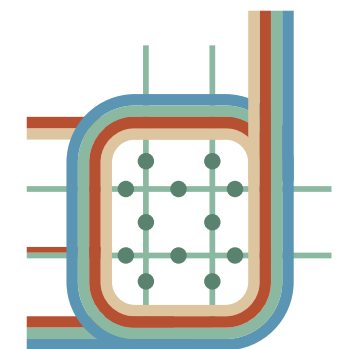
WATER LOOP
Water collection and reuse, filtration, marshland regeneration



SOCIAL MOBILITY LOOP
Arts hub, water research, ecotourism, improved transport links



CONNECTIVITY LOOP
Streetcar loop, cycle paths
Central train station, evacuation infrastructure



OVERALL LOOP
Loops of interventions
Greenways and pocket parks



Water attenuation



Water purification



Flood wall intervention



Policy documents



Ecotourism



Marshland nursery



Pocket parks



Education / research



Street furniture



Landmarks



Evacuation points



Street sections



Energy generation



Cycle paths



Public transport



The Dragonfly
New Orleans
Oct 2019 - Jan 2020

Team project: A masterplan project set in the city of New Orleans, setting the context for the M(Arch) Thesis project.

Faced with issues of fear of water, social immobility and disconnection a series of toolkits of interventions were devised to form a masterplan in New Orleans. They are incorporated through means of an urban design proposal, generating four main spines and layers of greenways which provide green and blue infrastructure, improved connectivity between neighbourhoods and the wider city, as well as opportunities for employment and economic development. These form 'loops' of toolkits that are connected through various means, further enforcing ideas of connectivity and mobility. They work in hand with a series of macro-scale policy proposals which altogether aim to capture the full potential of these interventions, fostering the city as an environmentally and socially-minded community.



亭亭玉立 Ting4 Ting4 Juk6 Lap6

Highlighted Entry - Hong Kong West Kowloon Cultural District Young Architects & Designers Competition 2017
Hong Kong
July 2017

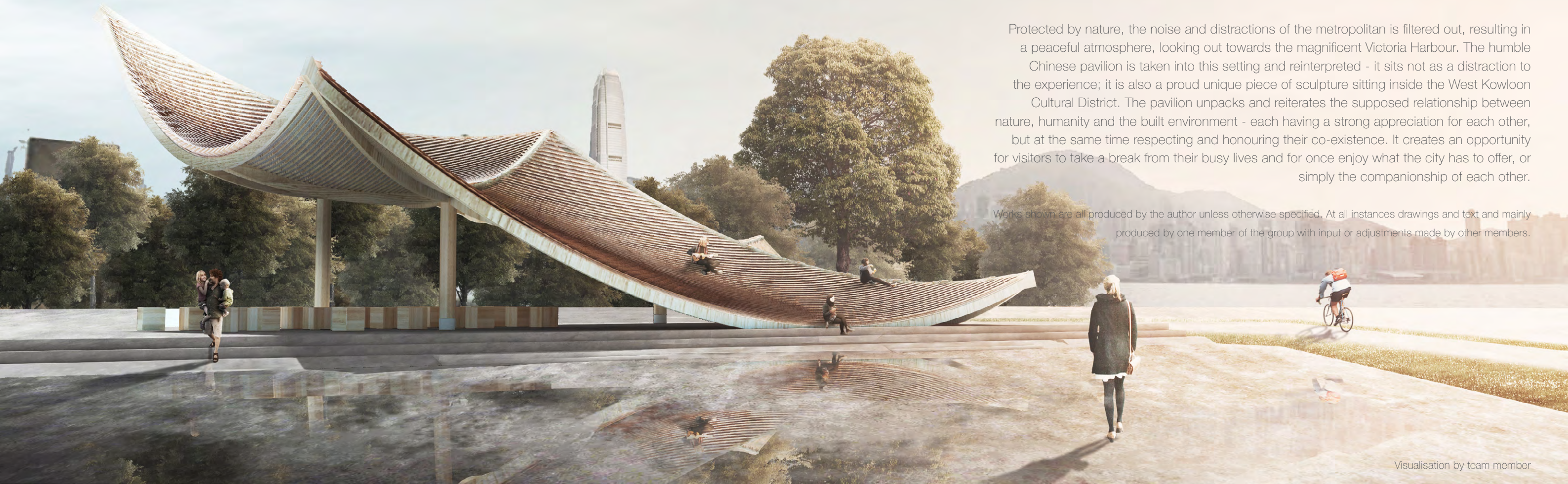


Team project: A pavilion set within the Nursery Park of WKCD in Hong Kong.

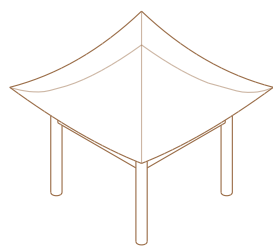
The countryside is one of the hidden gems of Hong Kong - residents and tourists often fail to appreciate the tranquility and beauty that nature has to offer. The Nursery Park is one of the attempts to bring this experience of nature into the urban environment. Within this journey, a Chinese pavilion is often present to bring shelter and a peace of mind to its visitors.

Protected by nature, the noise and distractions of the metropolitan is filtered out, resulting in a peaceful atmosphere, looking out towards the magnificent Victoria Harbour. The humble Chinese pavilion is taken into this setting and reinterpreted - it sits not as a distraction to the experience; it is also a proud unique piece of sculpture sitting inside the West Kowloon Cultural District. The pavilion unpacks and reiterates the supposed relationship between nature, humanity and the built environment - each having a strong appreciation for each other, but at the same time respecting and honouring their co-existence. It creates an opportunity for visitors to take a break from their busy lives and for once enjoy what the city has to offer, or simply the companionship of each other.

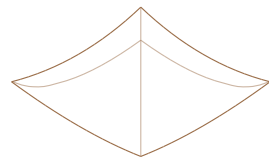
Works shown are all produced by the author unless otherwise specified. At all instances drawings and text and mainly produced by one member of the group with input or adjustments made by other members.



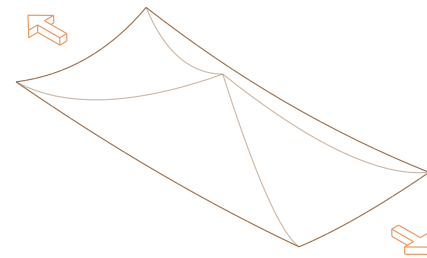
Visualisation by team member



Traditional Chinese pavilion typology



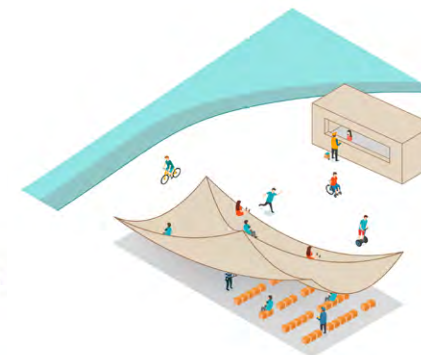
Retaining significant elements



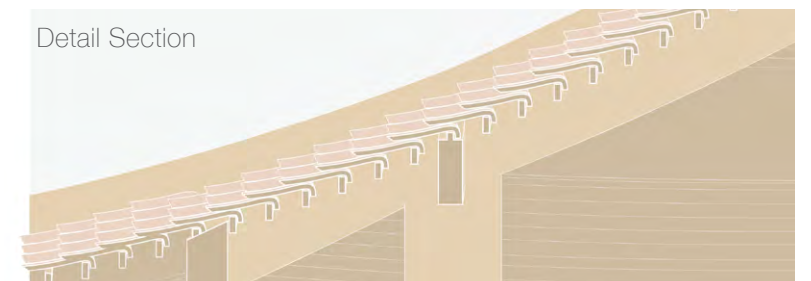
Maximising coverage within site



Dropping edges to open views to Victoria Harbour



Lifting edges to welcome visitors from Nursery Park



Detail Section



Section



EKKLÉSIA

B(Sc) Thesis Project
Weymouth
Jan - Jun 2018

A church and community centre - a celebration of Creator, Creation and Created

In contemporary Western society, faith (or 'religion') is often dismissed as something out-of-date, old-fashioned and not compatible with the thoughts and value systems of today. Christianity – one of the founding elements of Britain – is gradually becoming irrelevant to the occupants of its country except it being some kind of relict from the history books. Thus, this project seeks to reconnect faith with the reality of the world in both the ecological and social sense, while maintaining its faithful roots.

The aim of this project is to deliver a new church and a community centre to foster a stronger sense of community in the area of Overcombe. The site also makes strong reference to its relationship with nature and, consequently, the wider world. The hope is that this new church will be able to give new life and spirit into the area and engage with the neighbourhood to bring social change to the city and beyond.

Detailed section model 1:50



CAFE

The community wing offers full-height views into the Jurassic Coastline, providing adequate daylighting into the spaces that facilitate community activities. The stone-clad retaining wall, lit by sunlight, reminds visitors of the very 'grounded' nature of the church. It forms a crucial part of the church in celebrating the Creator, Creation and the Created.



NAVE

The nave makes a reference to its maritime roots as the concrete base supports and figuratively lifts the visitor up and out to the horizon and the sea. The level from which visitors enter from serves as the datum line which is marked by the transoms and steel connection joints between concrete columns and timber frames.



COMMUNITY PLAZA

The building project as a whole provides the ideal setting for all sorts of events and happenings which are made possible by its focus on the environment, the community and faith. It is a wonderful festival for all.

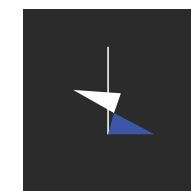
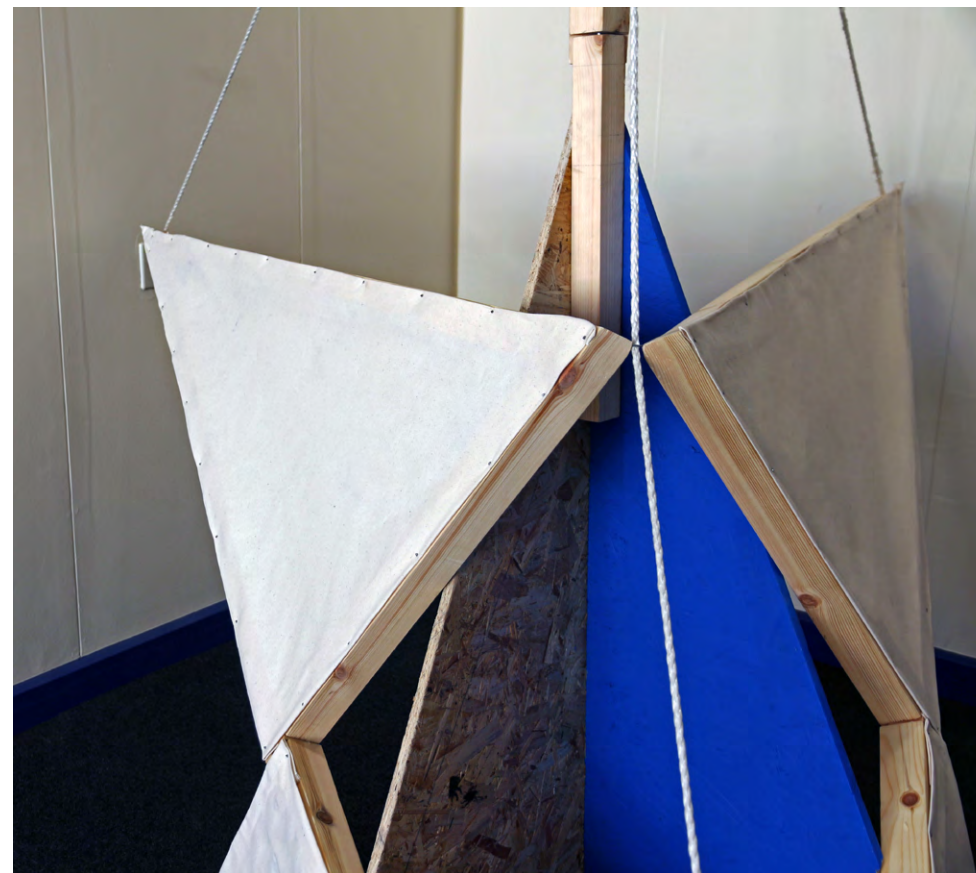
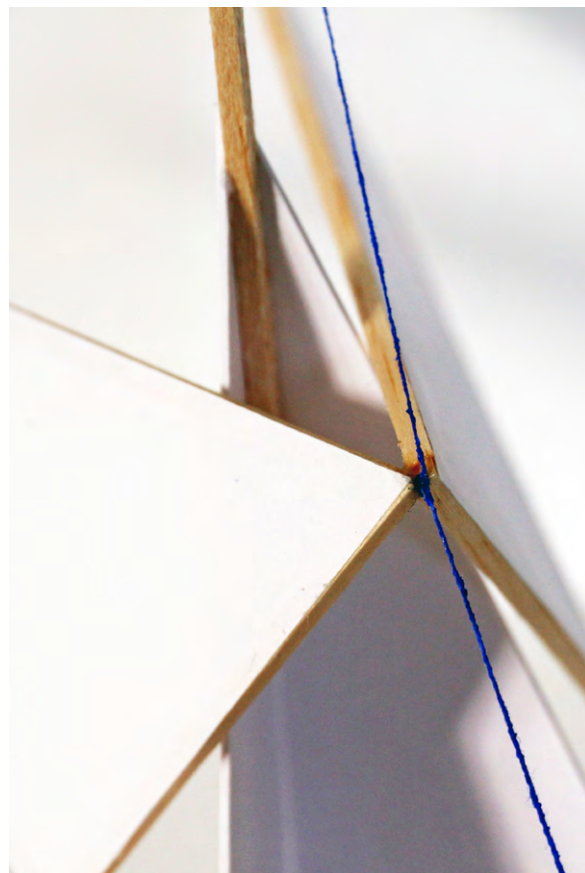
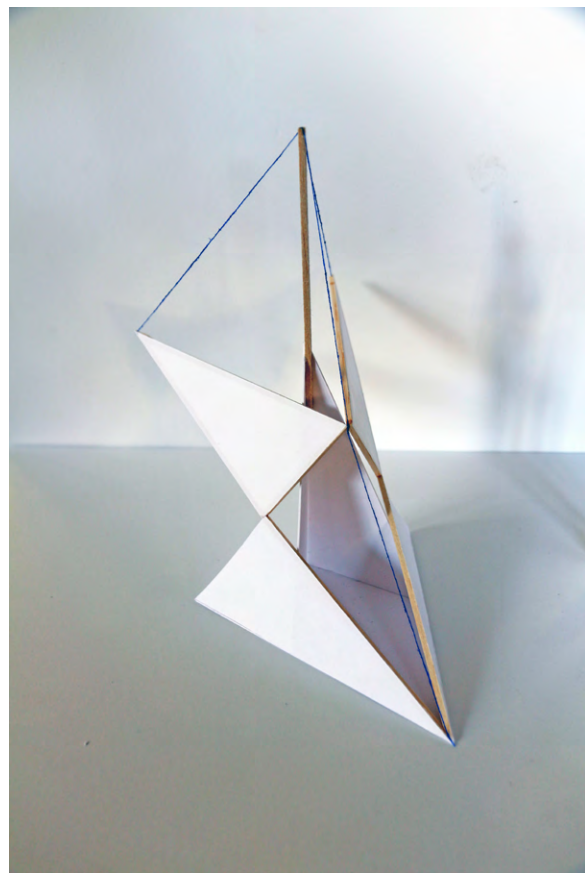


THRESHOLD

Group project
Bath
Feb 2019

'Threshold' is a week-long group project which challenges students to design and build an installation that best describes the concept on campus.

The inspiration for the installation came from a quiet corner in the middle of a busy road where we encountered someone stopping and making a private phone call. To highlight this, we were tasked to frame the site with minimum intervention, in order to signify the sense of privacy along a busy route. As a group, we decided to simply highlight the conditions of the site using fabric to create a comfortable area for phone conversations to continue in relative privacy and enhanced comfort.



KIN/GNOSIS

Group project
Bath
Oct 2014

As the first project of the Architecture course at University of Bath, teams formed of Civil Engineering and Architecture students are asked for their interpretation of the theme 'Kin/Gnosis'. Given the context, this project gives us the perfect opportunity to explore the relationship between the arts and science and express it in a creative manner.

The types and amount of material are prescribed and all of the given material should be used to its extent for artistic and structural purposes.



HANGER LANE GYRATORY STUDENT ACCOMODATION

London
Stages 4-5

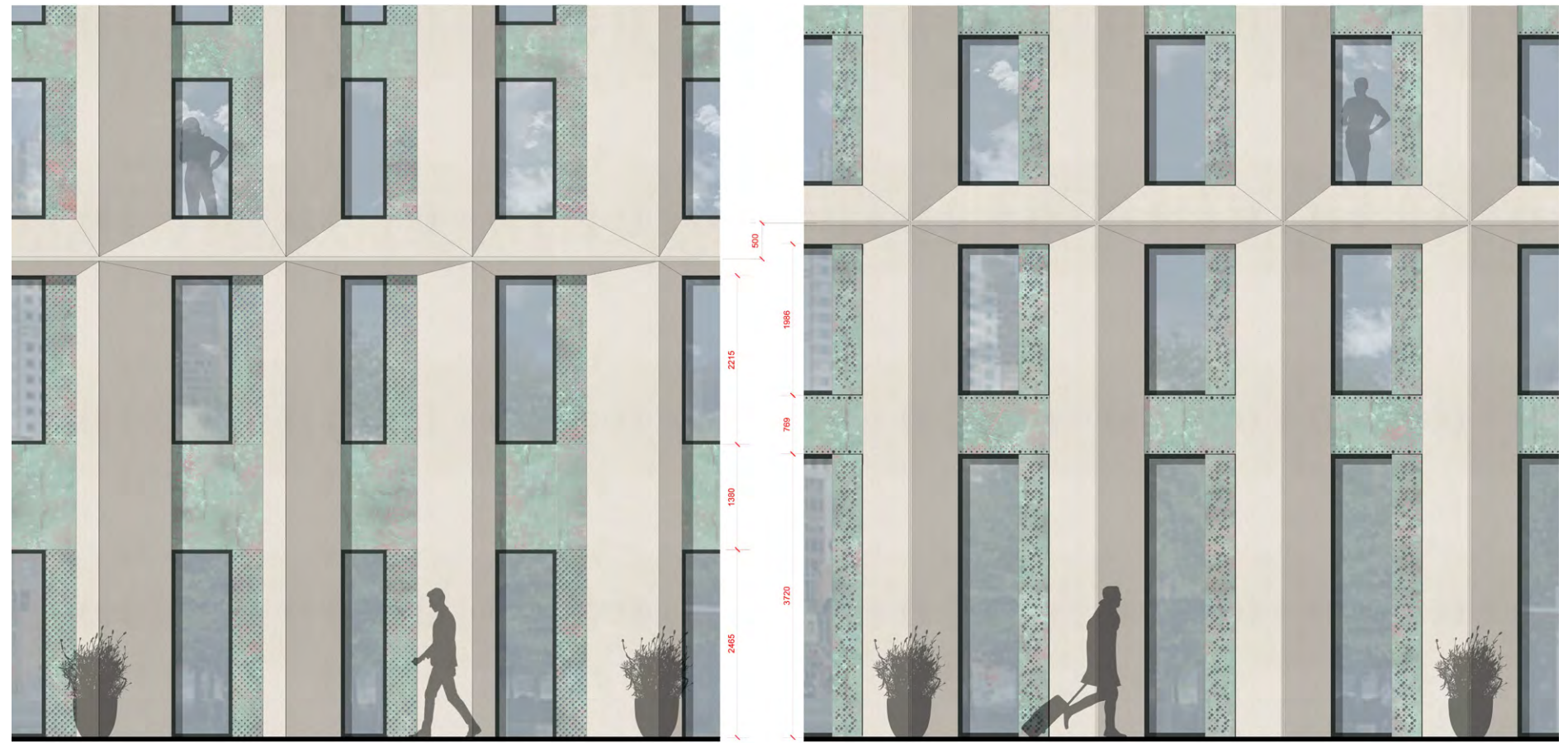
Working closely with the client and the contractor, the team was tasked to produce drawings and pre-construction works, taking over designs from a different architect in planning stage. The office promoted an integrated design, where key members of the design team worked within the same office, allowing for an efficient and cost-effective means of communication. I was tasked with preparing documents for non-material amendments, coordination with the contractor and suppliers, as well as design rationalisation and detailing exercises.



HALLMARK PROPERTY GROUP / CDS LLP

London
Aug 2018 - Jan 2019

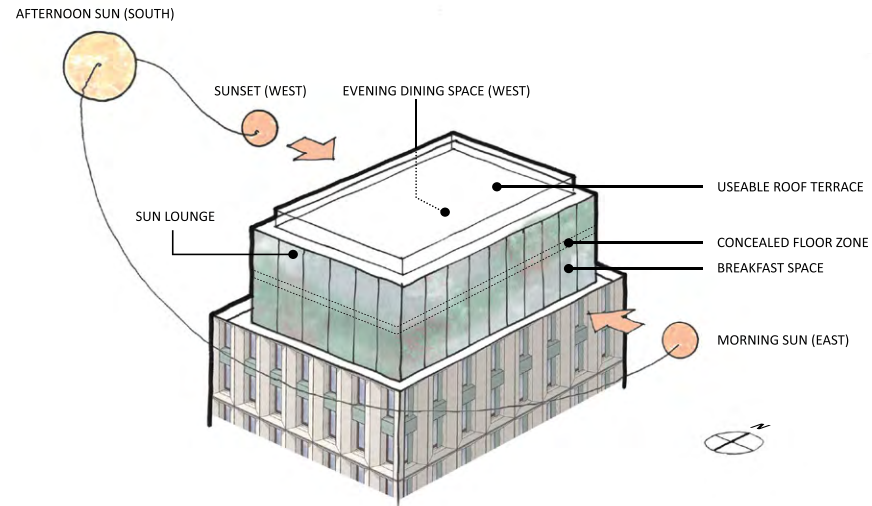
Copyrighted drawings reproduced with permission



SUBMITTED SCHEME

PROPOSED SCHEME

- Ground Floor windows made taller to reflect more generous clear height within.
- Copper at Ground Floor / Mezzanine floor zone re-proportioned to reflect rest of scheme and allow more light.
- Narrowest windows widened to raise minimum natural light levels within bedrooms.
- Foliage concept better articulated via more complex perforation patterns in copper.



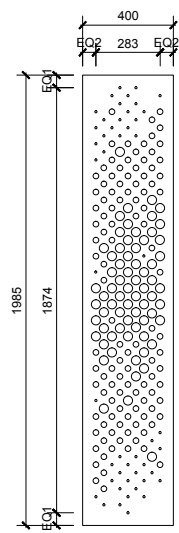
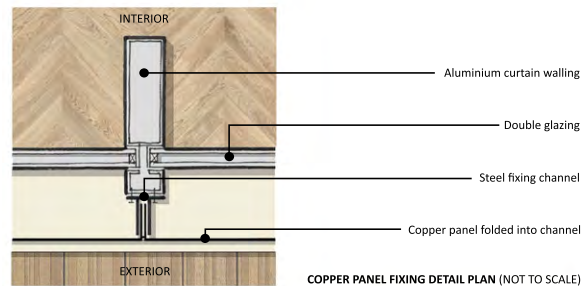
PERFORATION OF COPPER PANELS

Density of perforation corresponds with sunpath to allow for optimised views and sunlight levels at different times of day at various areas of the Sky Club. Open and well-lit spaces are created, as well as intimate and dimmer spaces. This allows varying functions throughout the day, reinforcing the Sky Club's role as a community-building space.

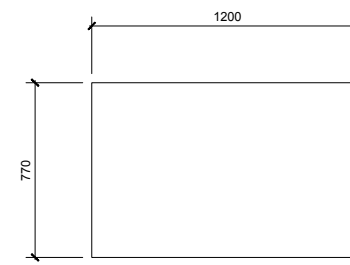
Images of tree foliage, with densities appropriate to the function of the adjacent interior spaces are digitally processed, creating four-tone images. Resulting images are rendered into copper panels using a 50mm grid-based perforation pattern, where darker tones are achieved with larger perforations, and lighter tones with smaller perforations. The lightest tones are rendered with no perforations at all. The image is arranged to feature the lightest tone and no perforations at the floor zone of the Sky Club, concealing the presence of an additional floor.

PATINATION IN COPPER PANELS

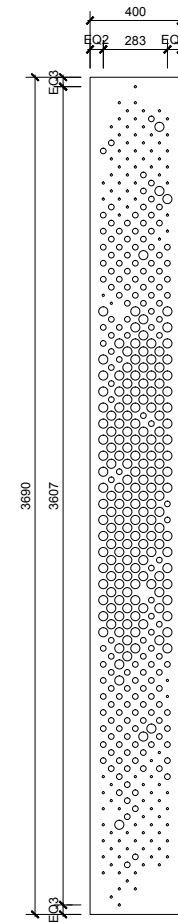
In line with the planning submission, aging copper panels are used. These panels will patinate and develop a green tint over a period of years.



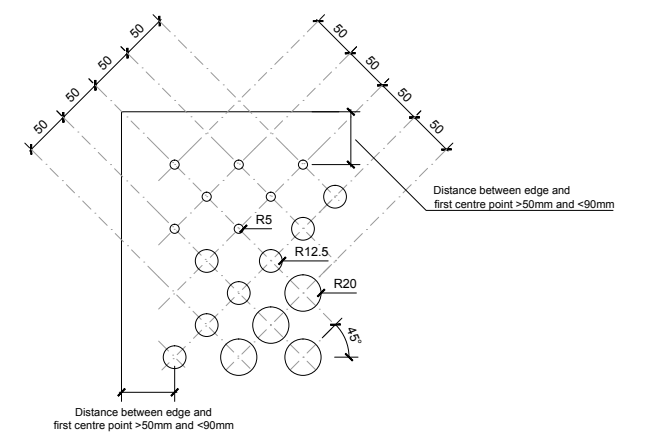
COPPER PANEL TYPE 1
No. off panels: 804



COPPER PANEL TYPE 2
No. off panels: 770mm(H); 415
085mm(W); 21

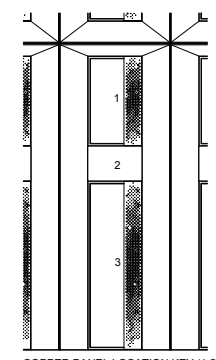


COPPER PANEL TYPE 3
No. off panels: 88



PERFORATION ARRANGEMENT (SCHEMATIC) (1:2.5 @ A1)

- Holes arranged in square grid of 45 degrees
- 3 hole sizes (R= 5mm, 12.5mm, 20mm)
- Precise pattern of holes subject to variation



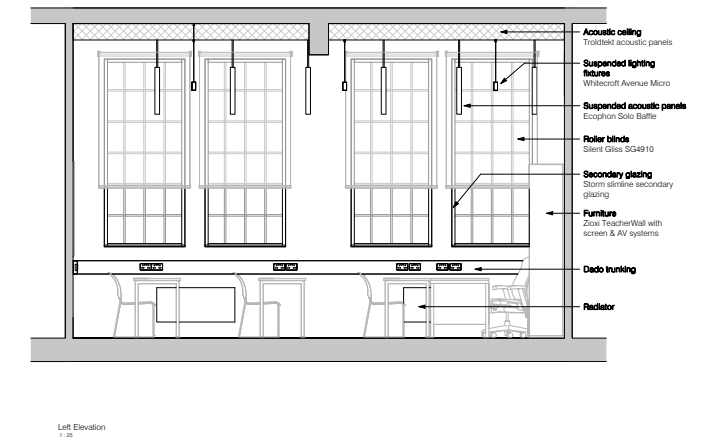
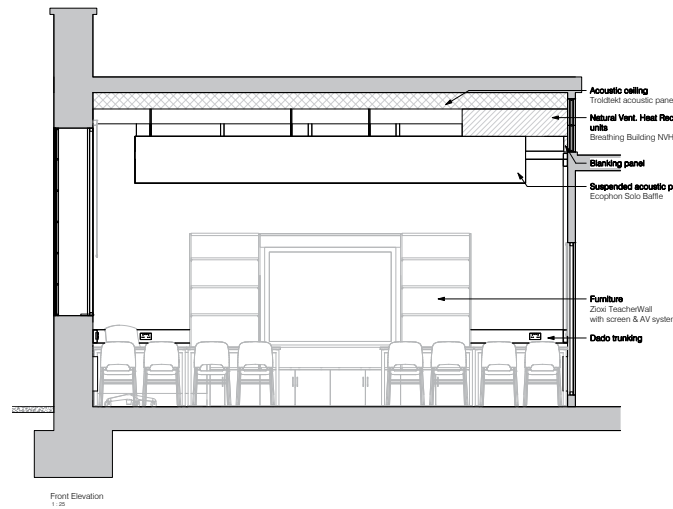
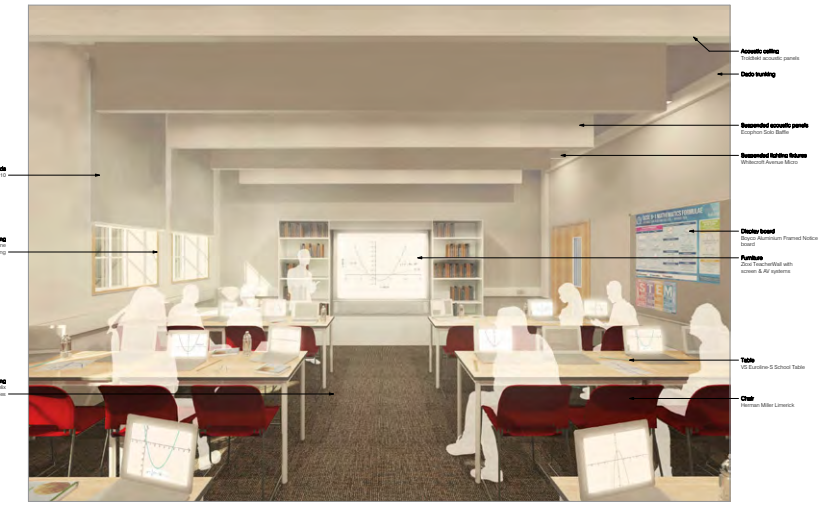
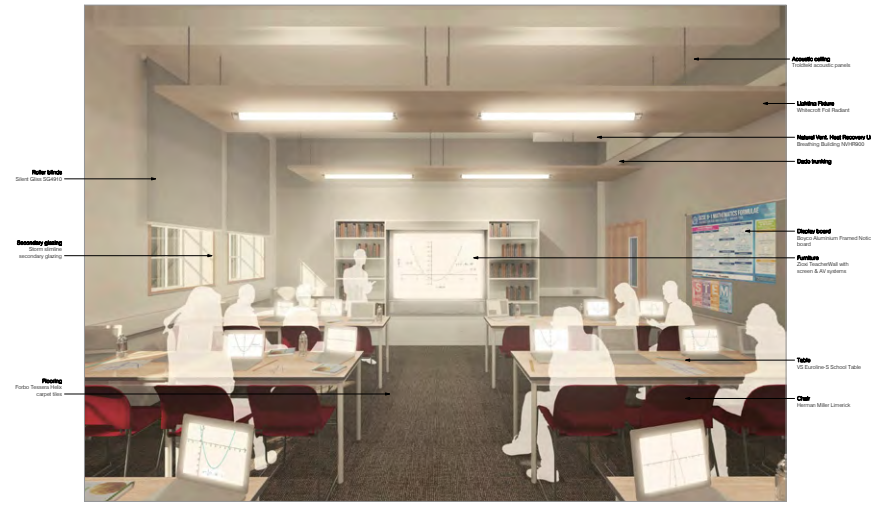
COPPER PANEL LOCATION KEY (1:50 @ A1)



PRIOR PARK COLLEGE CLASSROOM REFURBISHMENT

Bath
Conceptual Design

Commissioned by the Estates team at Prior Park College to investigate often to refurbish classrooms in a listed building on school grounds, in order to update them to modern standards for teaching. Particular issues involved consideration of the single-glazed windows which could not be altered to preserve its appearance within the UNESCO World Heritage Site, improving acoustic and thermal insulation performances and provision of up-to-date technology for teaching.

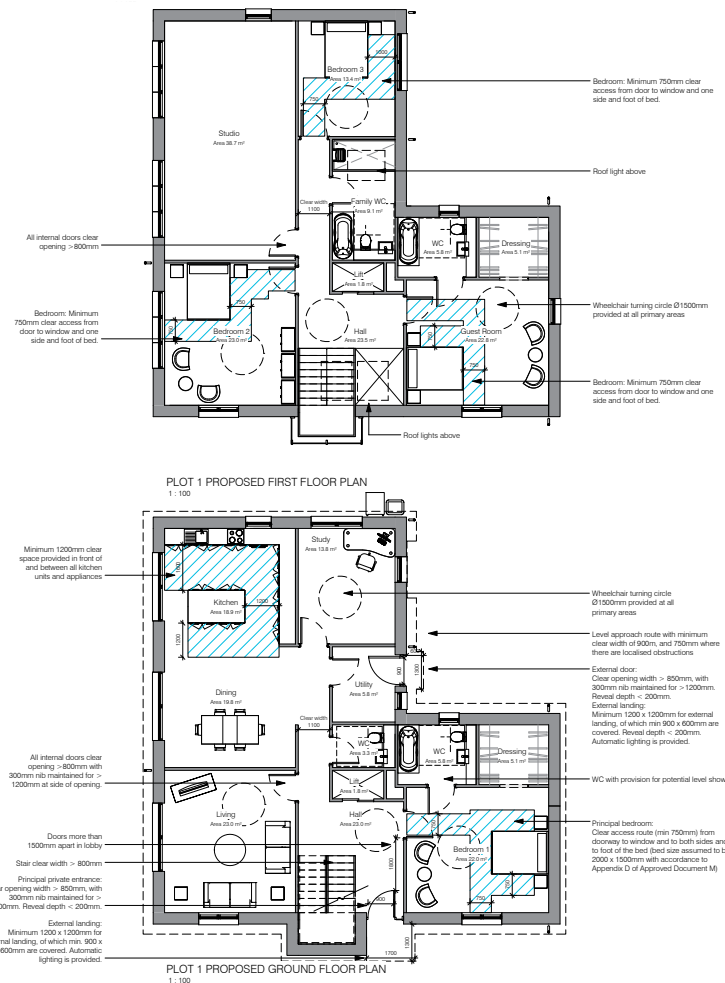


HOUSING DEVELOPMENT

Peasedown St John, Somerset
Stages 0-3

Directly appointed by the client to design 4 houses to a site in Peasedown St John. The site was a very sensitive one as it was faced with opposition from local level despite support at the pre-application stage, which required additional level of care towards the design of the project.

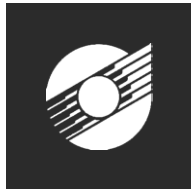
Use of Revit to model proposals designed by the Director, in addition to providing landscape and access solutions to the site. I had to take over from an existing Revit model which allowed me to learn from experienced technicians. I was also involved with communication with the client on design issues of the development, as well as communicating with the planning officer. There had been substantial changes to the scheme (such as decreasing the scale of development from 4 to 3 houses) which had to be liaised and balanced between the interests of the client and local authorities.



NVB ARCHITECTS

Frome
Feb - Aug 2017, Aug - Sep 2019

Copyrighted drawings reproduced with permission

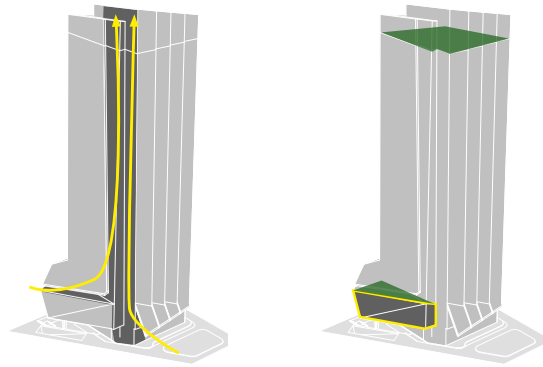


GRANDLAND GROUP HEADQUARTERS

Shenzhen, China
Architectural, Interior & Landscape Design

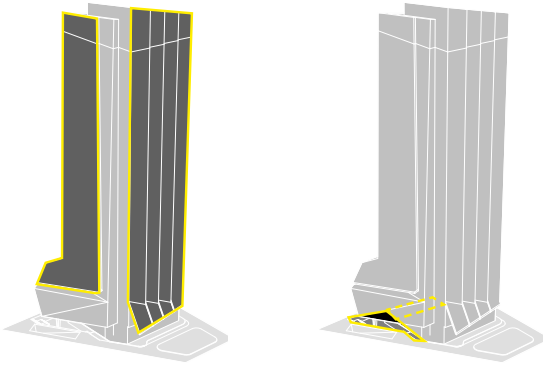
Commissioned by Grandland Group Co Ltd to design a highrise building of approximately 150m height, to be used as an office tower. Design scope includes the architectural and facade design, as well as landscaping. The total construction area is approximately 55000 square meters.

Currently in construction stage.



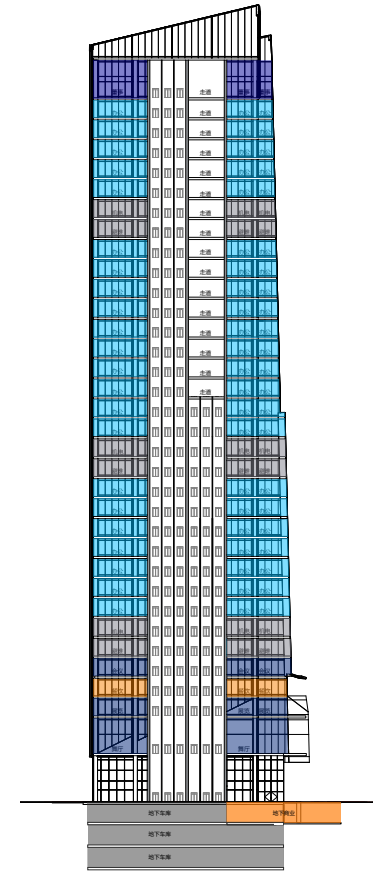
Recessed corner emphasizes verticality of building

Emphasis on banquet hall and utilising floor area for landscape



Providing shelter according to tower's needs

Sunken plaza provides separation between commercial and corporate entrances



Section showing space use distribution



External visualisation (by others)



PINGSHAN NEW TOWN URBAN RENEWAL

Shenzhen, China
Masterplanning, Landscape Design

Design for a masterplan for a 290,000 square meter plot, divided into a minimum of 2 phases, with a total construction area of more than 1 million square meters. The plot consists of residential developments as well as various commercial developments and public utilities and alludes to the historical background of the site.



Master Layout Plan
(Photoshop post-production by others)



Visualisation



MATTER DESIGN LTD

Hong Kong
Feb - Aug 2016
Copyrighted drawings reproduced with permission

